

# FUELING STATION

## Breakaway - Fill Line



Parker's NGVBCN2-P50 fill line breakaway provides an important safety feature for CNG dispensing systems. It is certified to ANSI/NGV4.4/CSA12.54 standards for breakaway devices used on natural gas dispensing hoses and systems. It allows the hose to safely disconnect, preventing damage to the dispenser in the event of a "drive off" and sealing the CNG in the fill line to effectively prevent leakage or hose whip.

### Features:

- Exclusive design
- Pressure balanced
- Reliable consistent performance
- Compact size
- Reusable following breakaway (with minimal inspection)

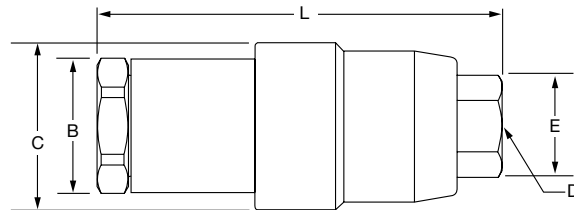
### Materials of Construction

<b>Material</b>	Brass and Stainless with Nitrile and Urethane Seals
-----------------	---

### Specifications

<b>Service Pressure</b>	3600 psi
<b>Forces to Actuate</b>	60/140 lbs. to disconnect at any pressure up to operating
<b>Temperature</b>	-40°F to +150°F (-40°C to +65°C)

### NGVBCN2-P50



Part Number	B - Hex	C - Largest Diameter	D - Port End	E - Hex	L - Connected Length
NGVBCN2-P50	1.12" 28.4 mm	1.53" 38.9 mm	3/8" SAE O-Ring Boss	0.81" 20.6 mm	3.73" 94.7 mm