



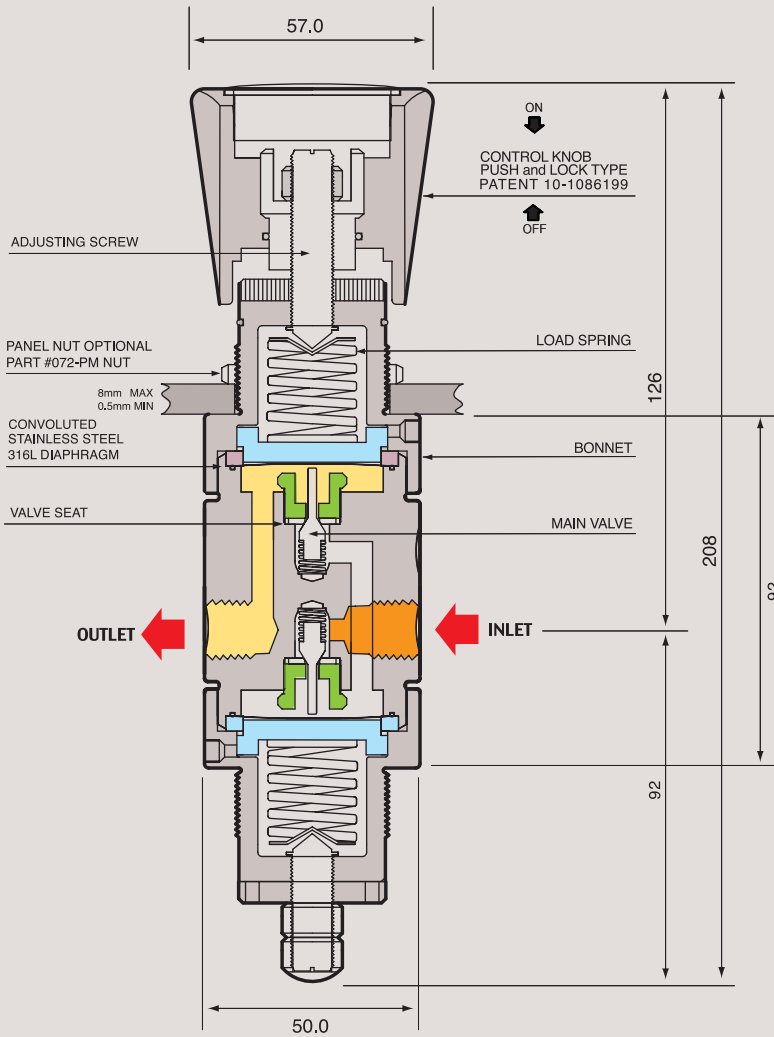
# 2000 S E R I E S



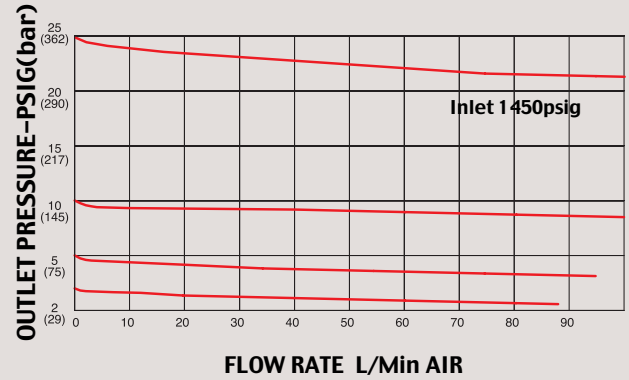
Two Stage Pressure Regulator



## FUNCTIONAL SCHEMATIC

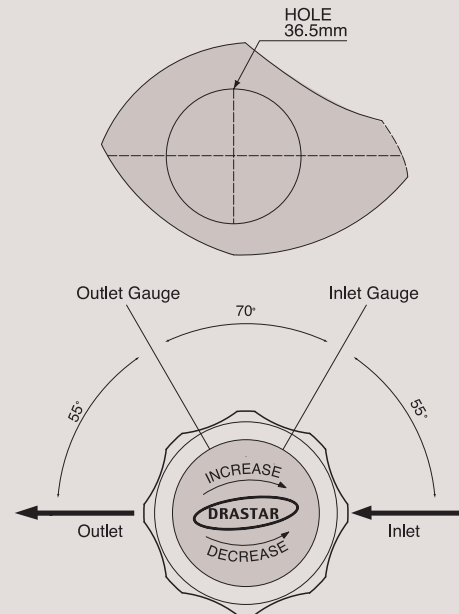


## FLOW CHART



FLOW RATE L/Min AIR

PANEL CUT-OUT



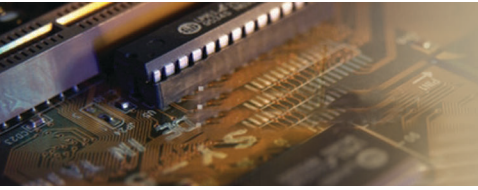
## 2000 SERIES

2000 시리즈는 고압가스를 저압에서 안정적으로 사용할 수 있도록 고안된 Two Stage Reducing Regulator 시리즈입니다. 본체와 내부의 모든 부품은 Stainless Steel 316L로 이루어져있어 부식성 가스 또는 고순도 가스를 편리하고 안심하게 사용할 수 있도록 설계하였으며 사용 압력은 Inlet 250bar이며 Outlet 20bar까지 사용하기에 더욱 적합한 제품입니다. 모든 DRASTAR Regulators는 외부적인 진동과 가스라인의 미세 진동 등으로 인하여 초기 셋팅 값이 스스로 변하는 현상을 완전히 해결한 드라스타만의 Push and Lock 타입의 조절 손잡이를 적용하여 사용하기에 더욱 편리합니다. 조절 손잡이를 누르면 셋팅값이 변하는 것을 방지하며, 손잡이를 앞으로 당기면 자유롭게 원하는 압력으로 다시 셋팅 할 수 있는 드라스타만의 특허 10-1086199 Push and Lock 타입의 레귤레이터입니다.

**2000series** Twostage reducing Gas regulators are specially designed to regulate high pressure gas to use in low pressure status. As the product's body and all internal parts

Are made of stainless steel 316L that is strong for corrosiveness and high purity application. Max inlet pressure is 250 bar and outlet pressure can be used upto 20 bar.

DRASTAR regulators are designed and manufactured for easier operation by equipping with the DRASTAR's own developed push and lock type handle which completely prevents the self-change of pre-set value which can be caused by the vibration from outside or minute vibration at the gas pipeline.



**REFERENCE**

This catalogue is printed as of January 2016, and the dimensions and/or specifications in this catalogue can be changed without prior notice in the course of constant upgrading and improvement of our products.

You can prevent the self-changing of pre-set value just by pushing the handle and reset the value freely by drawing the handle. DRASTAR has created and applied patent for this push and lock system for DRASTAR regulators (patent number 10-1086199)

**권장 사항**

각 제품들은 최고의 안전성과 쉬운 작동법을 고려하여 제작되었습니다. 그러나 가장 안전하고 효율적인 Regulator 사용을 위해서는 실제사용 압력을 각각모델의 사용 압력에 25%~75% 이내에서 사용하면 가장 이상적인 압력을 사용할 수 있습니다, 정밀하고 원활한 동작과 제품의 수명 연장을 위해서는 위의 범위 내에서 사용하기를 적극 권장합니다.

**Recommendations**

Each product is manufactured since being taken into consideration of the best safety and easy manipulation. However in order to use the regulator in most safe and effective way, you are recommended to use the actual pressure within the range of its 25% ~ 75%. For making precise, smooth movement and to prolong product life, strongly recommended to make a use within above mentioned range.

**SPECIFICATIONS**

Connections	NPT 1/4" Female (inlet, outlet and gauge ports)
Maximum Rated Inlet Pressure	250bar (3500psig)
Outlet Pressure Ranges	0-2bar, 0-5bar, 0-10bar, 0-20bar
Design Proof Pressure	150% of maximum rated pressure
certified maximum Inboard Leak Rate	2x10 <sup>-8</sup> atm cc/sec Helium
Body Materials	316L Stainless Steel
Bonnet Material	Nickel Plated Brass or 316L Stainless Steel (Optional)
Diaphragm	316L Stainless Steel or Hastelloy-C (Optional)
Main Valve	316L Stainless Steel or Hastelloy-C (Optional)
Valve Seat	Teflon
Operating Temperature	-40°C to +75°C
Flow Capacity	Cv = 0.06
Decaying Inlet Characteristic	(0.05 change/100psig inlet pressure)

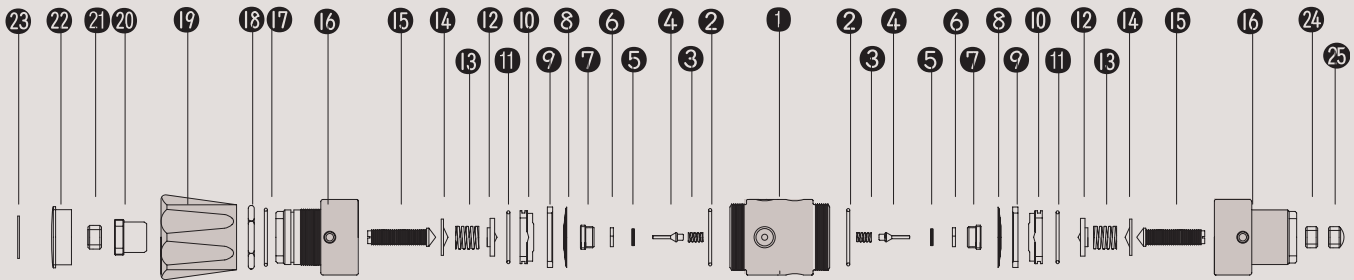
**ORDERING INFORMATION**

**2000      S      -      002      -      NP4      -      S      H**

BASIS SERIES NUMBER	BODY MATERIAL	OUTLET PRESSURE RANGE	INLET AND OUTLET PORTS SIZE	FLOW CAPACITY	DIAPHRAGM MATERIAL
Standard Inlet Pressure 3500PSIG (238 bar)	B = Brass S = Stainless Steel 316L	002 = 1-2bar 1-29PSIG 005 = 1-5bar 1-75PSIG 010 = 1-10bar 1-145PSIG 025 = 1-25bar 1-360PSIG	NP4 = 1/4" NPT	S = Cv 0.06 Standard O = Cv 0.2 Optional	STS 316L Standard H = Hastelloy-C Optional



## 2000 SERIES PART LIST



### STANDARD MODEL SERIES

Item No.	Description	Part No.	Model Application
01	Body	2000-02-01	02-01 Stainless Steel 316L body / 02-02 Brass body
02	Body O-Ring	2000-02-00	All Model Same
03	Valve Spring	2000-04-01	04-01 STS 316L / 04-03 Hastelloy-C-22 / 04-04 Monel
04	Main Valve	2000-06-01	06-01 STS 316L / 06-03 Hastelloy-C-22 / 06-04 Monel
05	Valve Seat	2000-10-01	10-01 PFA / 10-05 Vespel / 10-06 Peek
06	Valve Seat Cartridge	2000-08-01	08-01 Stainless Steel 316L / 08-02 Brass
07	Locking Screw	2000-12-01	All Model Same
08	Diaphragm	2000-16-01	16-01 STS 316L / 16-02 Hastelloy C-22
09	Diaphragm Plate	2000-22-02	All Model Same
10	Back-up Plate	2000-26-03	All Model Same
11	Back-up Plate O-Ring	2000-28-01	All Model Same
12	Spring Plate	2000-30-01	All Model Same
13	Load Spring	2000-38-01	11-01 26psi / 11-02 50psi / 11-03 100psi / 11-05 250psi / 11-07 500psi
14	Pivot	2000-40-01	All Model Same
15	Adjusting Screw	2000-42-01	All Model Same
16	Bonnet	2000-44-02	02-01 Stainless Steel 316L / 44-02 Brass 1st. 44-03 STS316L 44-04 Brass
17	Push & Lock O-Ring	2000-46-01	All Model Same
18	Panel mount Nut	2000-48-01	All Model Same
19	Control Knob	2000-50-01	50-01 ABS / 50-04 Aluminum Control knob
20	Push & Lock Handle nut	2000-52-01	All Model Same
21	Locking Nut	2000-54-01	All Model Same
22	Name Cap	2000-56-01	56-01 ABS
23	Name Cap Plate	2000-58-01	59-01 2bar, 59-02 5bar, 59-03 10bar, 59-04 25bar
24	1st Bonnet Locking Nut	2000-	All Model Same
25	1st Bonnet Cap Nut	2000-	All Model Same