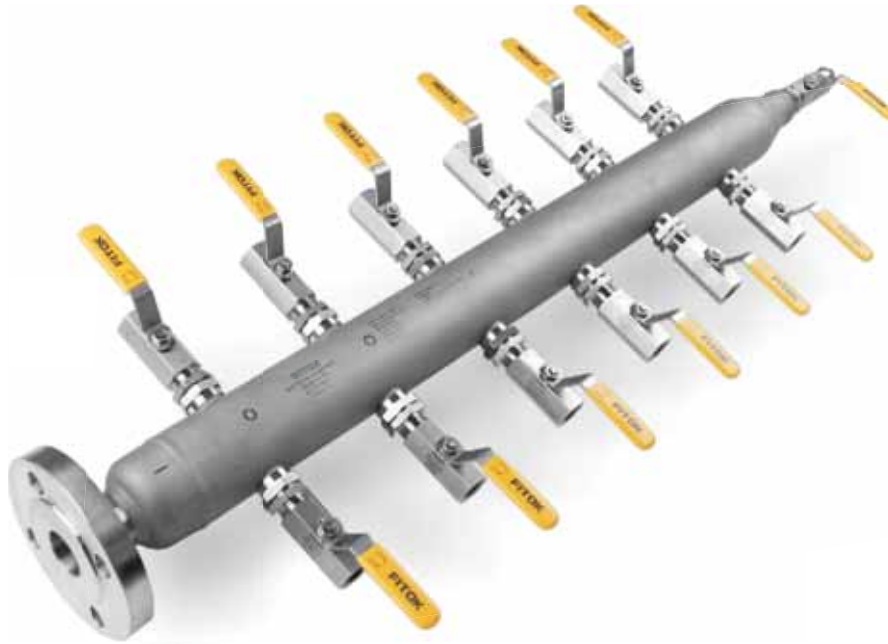


Air Headers and Distribution Manifolds

AH, AP, MP, MN and CM Series



Contents

Air Headers

AH Series



C-54

Air Headers and Distribution Manifolds

AP, MP, MN and CM Series



C-58

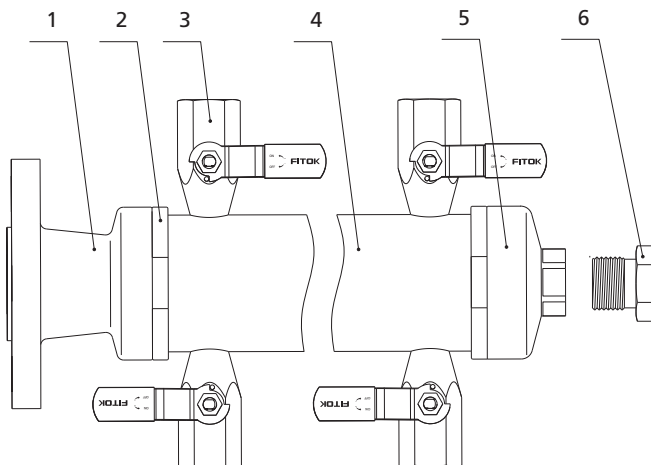
Air Headers

AH Series

Features

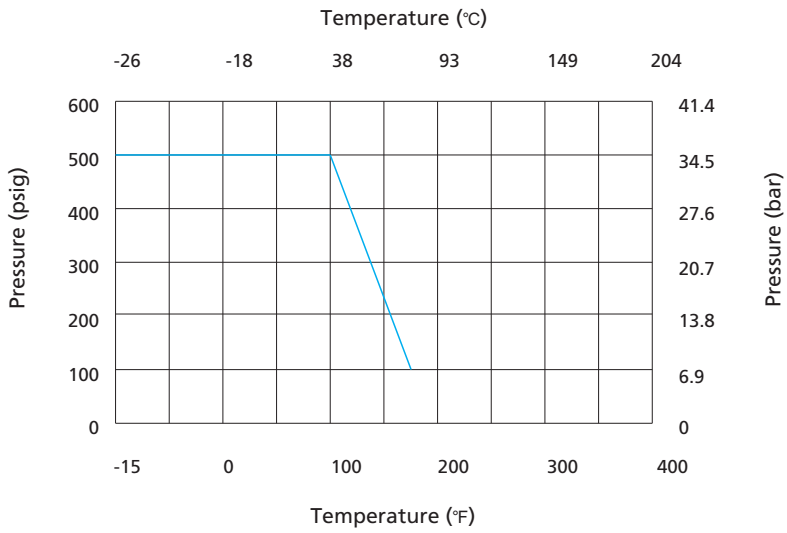
- ⦿ Compact design allows easy installation
- ⦿ Maximum working pressure up to 500 psig
- ⦿ Modular design with four distribution lines as standard
- ⦿ 8 distribution lines, 12 distribution lines or more lines available upon request
- ⦿ Multiple choices of inlet types and drain types for the same product
- ⦿ Inlet and vent fittings connect the main line by use of O-rings seal to provide reliable sealing
- ⦿ Distribution valves with non-metallic filling sealing to ensure zero leakage
- ⦿ Quick open or close by ball valves, use as standard distribution valves

Materials of Construction



Item	Component	Material/ASTM Specification	
1	Inlet Valve	BG Series Ball Valve	
	Flange/Fitting	304SS/A182	316SS/A182
2	Locking Nut	304SS/A479	
3	Distribution Valve	BR Series Ball Valve	
4	Main Line	304SS/A312	316SS/A312
5	Drain Connection	304SS/A479	316SS/A479
6	Drain Valve	BR Series Ball Valve	
	Plug	304SS/A479	316SS/A479

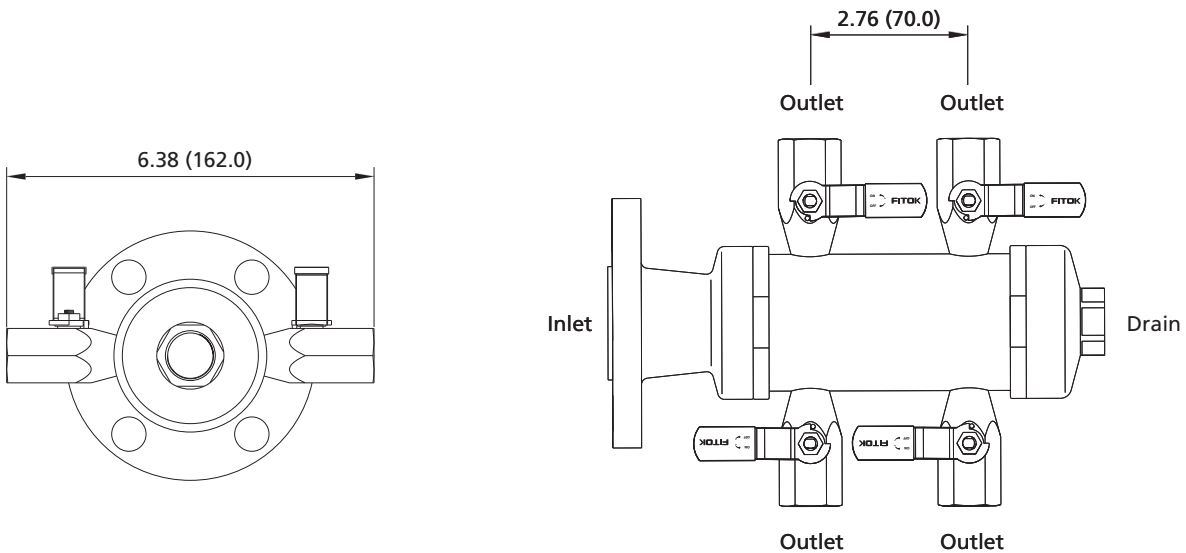
Pressure vs. Temperature



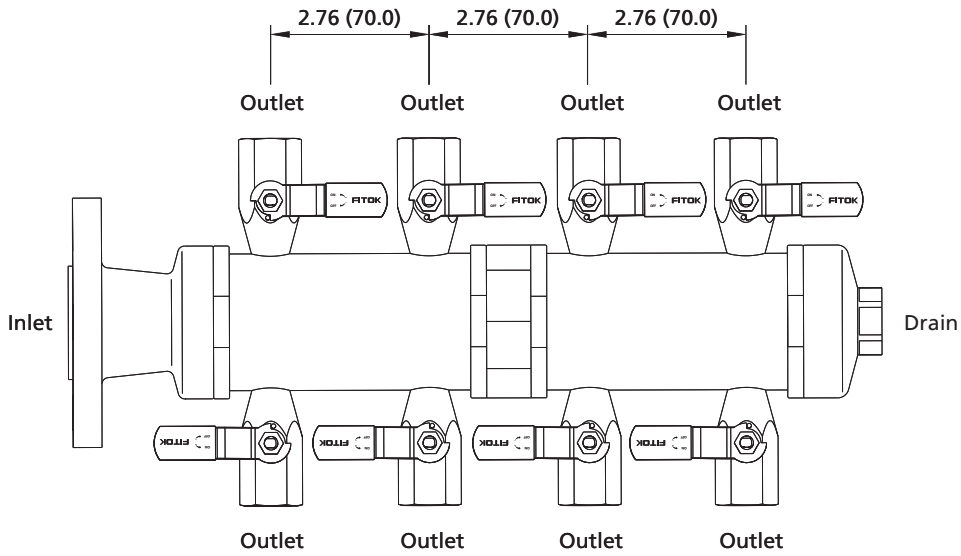
Dimensions

Dimensions, in inches (millimeters), are for reference.

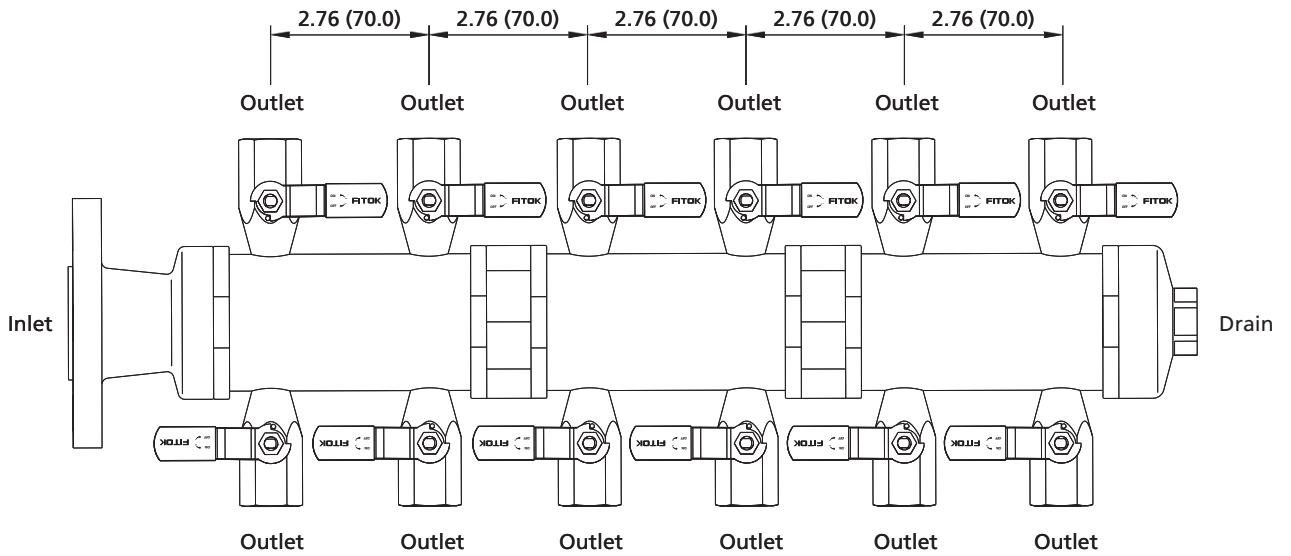
4-Outlet Type



8-Outlet Type



12-Outlet Type



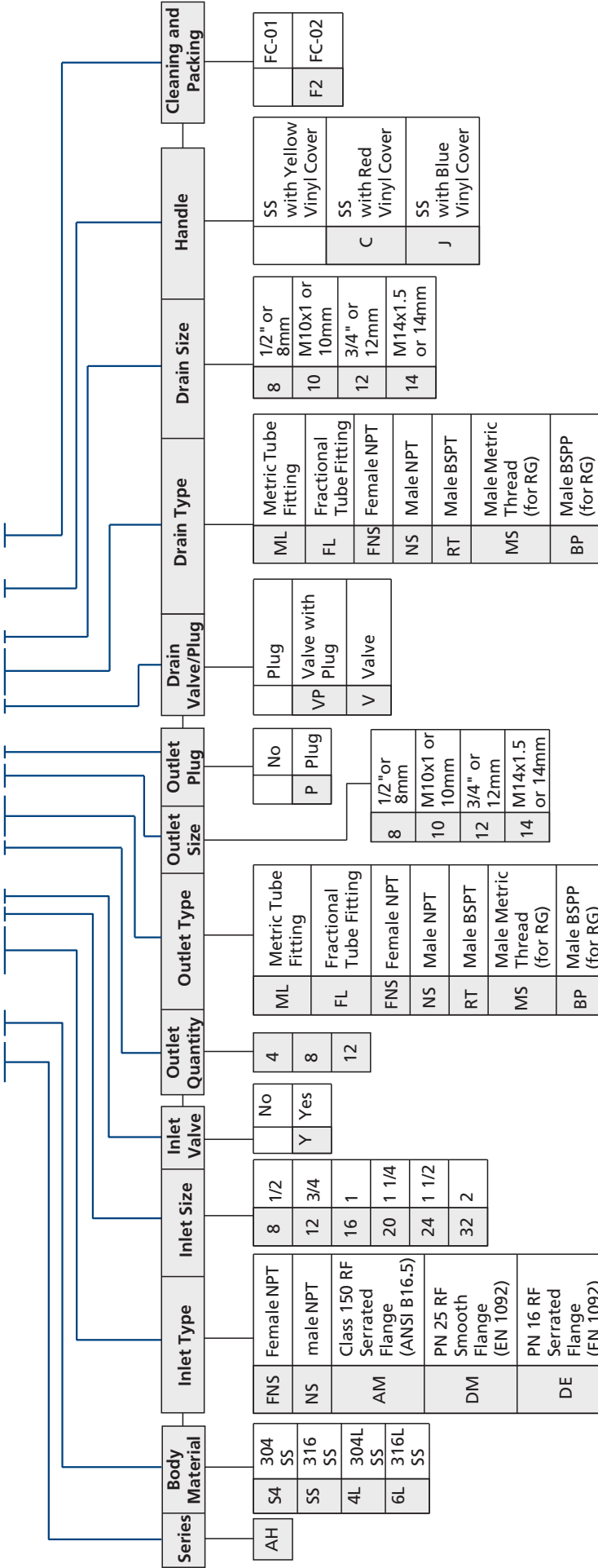
Caution:



Hold the valve body first when installing the fitting onto the outlet line. If the valve body bears large rotational torque, branch seal areas may be loose and leak may occur.

Ordering Number Description

AHS4 – FNS8Y – 4ML10P – VFNS8 – C – F2



Note: "Ordering Number Description" is a reference to understand the combination rules of FITOK product part number. Not all combinations are available.

Cleaning and Packaging:
 FC-01: Standard cleaning and packaging for general industrial procedures.
 FC-02: Special cleaning and packaging for wetted system components to ensure compliance with product cleanliness requirements as stated in ASTM G93 Level C.

Air Headers and Distribution Manifolds

AP, MP, MN and CM Series

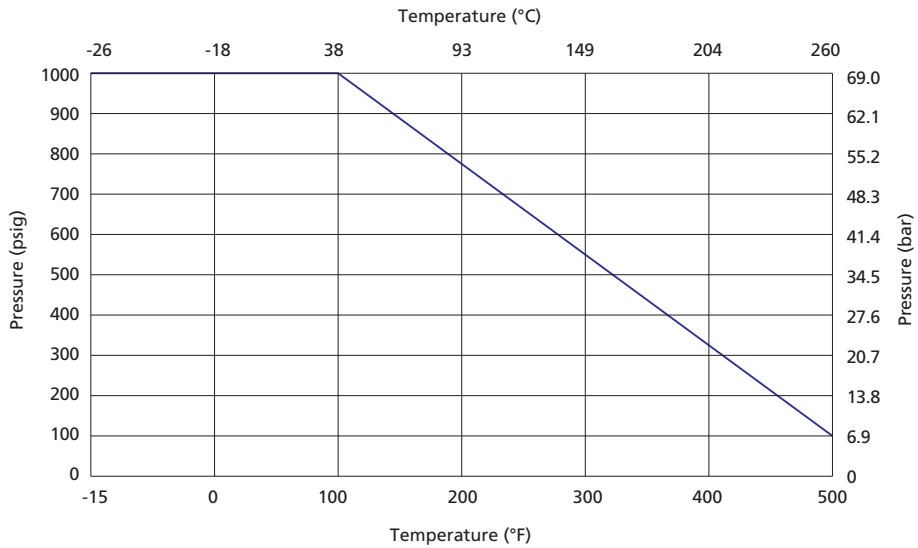
Features

- ⦿ Distribution lines available upon request
- ⦿ Ball valve, plug valve, needle valve available for distribution lines and drain port
- ⦿ Color coded handles available
- ⦿ Leak-tight performance testing for every valve under nitrogen condition at the maximum working pressure

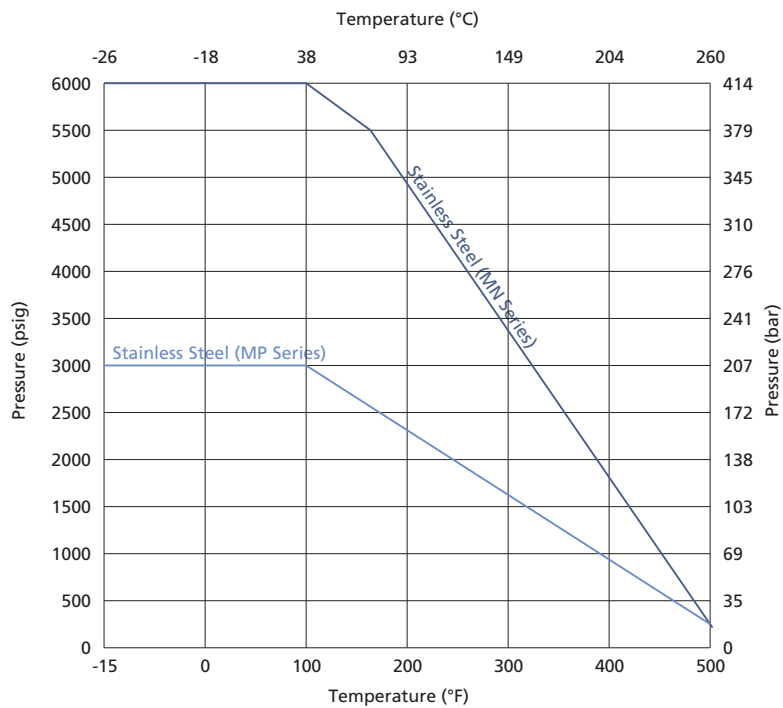
Pressure vs. Temperature

Air Headers

AP Series



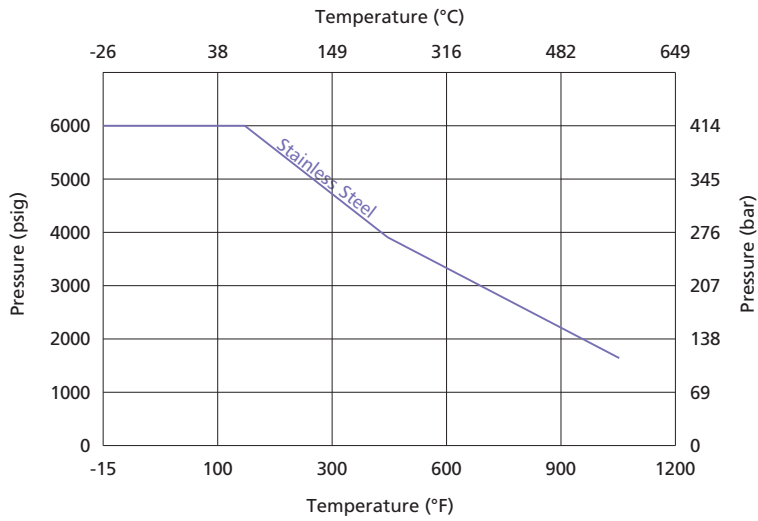
MP and MN Series



Air Headers
Distribution Manifolds

Distribution Manifolds

CM Series



End Connections

AP, MP, MN Series

Part	Type	Size	Standard
Inlet Connection	Male NPT	1/2, 3/4, 1	ASME B 1.20.1, GB/T 12716
	Female NPT		ISO 7/1, DIN 2999, GB/T 7306.2
	Female BSP Tapered		ISO 228-1, DIN 3852, GB/T 7307
	Female BSP Parallel		ANSI B 16.5
	Flange	Class 150, Class 300 PN16, PN40	GB/T 9115.1, DIN 2634
Outlet Connection	Male NPT	1/4, 1/2	ASME B 1.20.1, GB/T 12716
	Female NPT		FITOK Tube Fitting
	Fractional Tube Fitting	1/2"	
	Metric Tube Fitting	12 mm	
Drain Connection	Female NPT	1/4, 1/2	ASME B 1.20.1, GB/T 12716
	Male NPT		

1. Sizes and types listed are standard. Other sizes and types are available upon request.
2. For dimensions not shown above, please contact FITOK Group or our authorized distributors.

CM Series

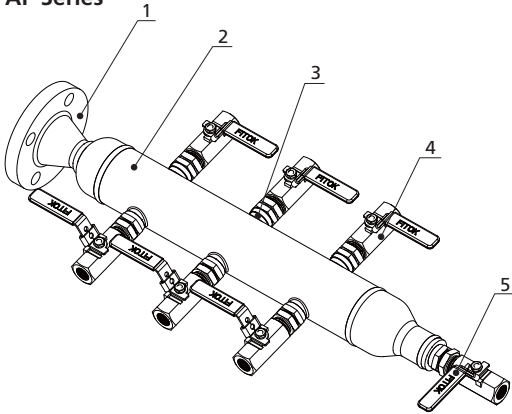
Part	Type	Size	Standard
Inlet Connection	Female NPT	1/2, 3/4, 1	ASME B 1.20.1, GB/T 12716
Outlet Connection	Female NPT	1/4, 3/8, 1/2	
Drain Connection	Female NPT	1/2, 3/4, 1	

1. Sizes and types listed are standard. Other sizes and types are available upon request.
2. For dimensions not shown above, please contact FITOK Group or our authorized distributors.

Construction

Air Headers

AP Series



Standard Materials of Construction

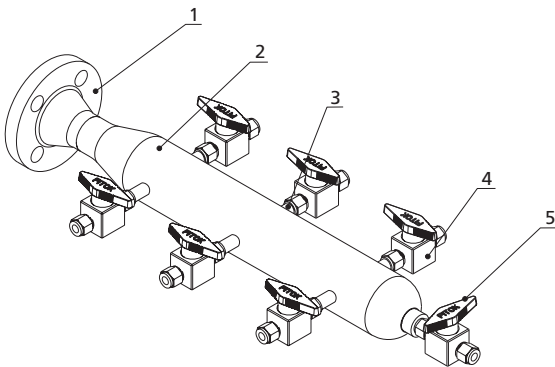
Item	Component	Material/ASTM Specification	
		Stainless Steel	
1	Inlet Valve	BG Series Ball Valve	
	Flange	304 SS/A182	316 SS/A182
2	Main Line	304 SS/A312	316 SS/A312
3	Branch Fitting	304 SS/A276	316 SS/A276
4	Distribution Valve	BR series ball valve as standard option	
5	Drain Valve	BR series ball valve as standard option	
	Plug	304 SS/A276	316 SS/A276

Optimized Setting of the Main Pipe and the Branch

Main Line Size	Quantity of Distribution Valves	Distance Between Two Outlets (mm)
NPS 2 (Sch 10)	6	100
	12	

1. Quantity of distribution valves listed is standard. Other sizes and types are available upon request.
2. For dimensions not shown above, please contact FITOK Group or our authorized distributors.

MP Series



Standard Materials of Construction

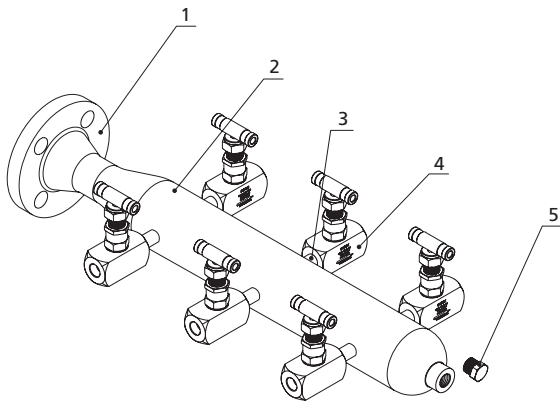
Item	Component	Material/ASTM Specification	
		Stainless Steel	
1	Inlet Valve	BH Series Ball Valve	
	Flange	304 SS/A182	316 SS/A182
2	Main Line	304 SS/A312	316 SS/A312
3	Branch Fitting	304 SS/A276	316 SS/A276
4	Distribution Valve	PV series plug valve as standard option	
5	Drain Valve	PV series plug valve as standard option	
	Plug	304 SS/A276	316 SS/A276

Optimized Setting of the Main Pipe and the Branch

Main Line Size	Quantity of Distribution Valves	Distance Between Two Outlets (mm)
NPS 2 (Sch 160)	6	100
	12	

1. Quantity of distribution valves listed is standard. Other sizes and types are available upon request.
2. For dimensions not shown above, please contact FITOK Group or our authorized distributors.

MN Series



Standard Materials of Construction

Item	Component	Material/ASTM Specification	
		Stainless Steel	
1	Inlet Valve	NB Series needle valve	
	Flange	304 SS/A182	316 SS/A182
2	Main Line	304 SS/A312	316 SS/A312
3	Branch Fitting	304 SS/A276	316 SS/A276
4	Distribution Valve	NF series needle valve as standard option	
5	Drain Valve	NF series needle valve as standard option	
	Plug	304 SS/A276	316 SS/A276

Optimized Setting of the Main Pipe and the Branch

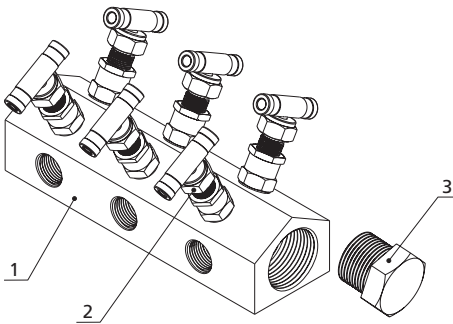
Main Line Size	Quantity of Distribution Valves	Distance Between Two Outlets (mm)
NPS 2 (Sch 160)	6	100~150*
	12	

* Distance between two outlets are determined by the distribution valves.

1. Quantity of distribution valves listed is standard. Other sizes and types are available upon request.
2. For dimensions not shown above, please contact FITOK Group or our authorized distributors.

Distribution Manifolds

CM Series



Standard Materials of Construction

Item	Component	Material/ASTM Specification	
		Stainless Steel	
1	Main Line	304 SS/A479	316 SS/A479
2	Distribution Valve	NB series needle valve	
3	Drain Plug	304 SS/A276	316 SS/A276

Carbon steel and other materials are available upon request.

Optimized Setting of the Main Pipe and the Branch

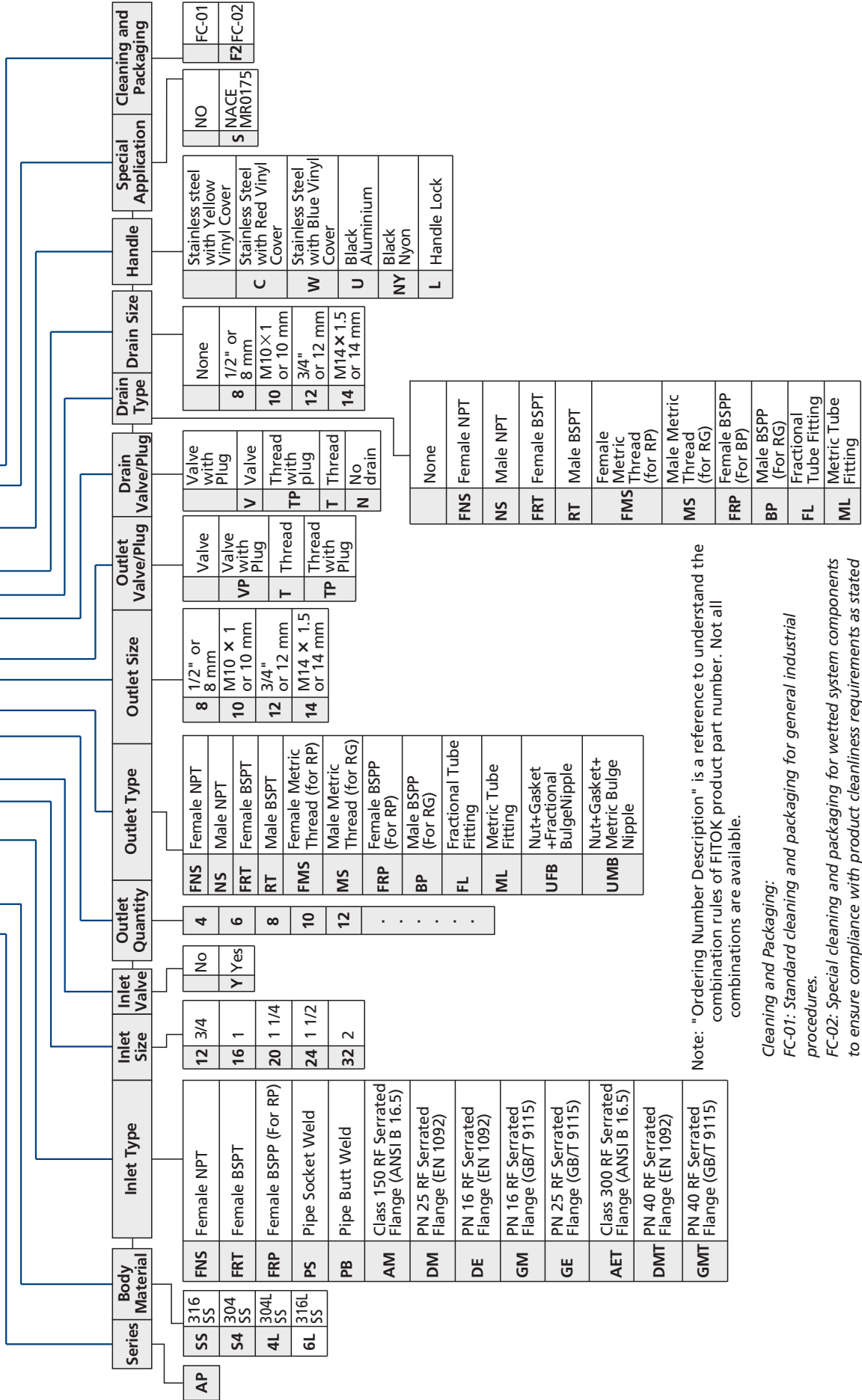
Quantity of Outlet Connections	Type and size of Outlet Connections	Distance Between Two Outlets (mm)
4~18	1/4" female NPT	60

1. Quantity of distribution valve listed are standard. Other sizes and types are available upon request.
2. For dimensions not shown above, please contact FITOK Group or our authorized distributors.

Ordering Number Description

AP Series

APSS – FNS16Y – 8NS12T – TNS8 – C – SF2



Note: "Ordering Number Description" is a reference to understand the combination rules of FITOK product part number. Not all combinations are available.

- Cleaning and Packaging:**
 FC-01: Standard cleaning and packaging for general industrial procedures.
 FC-02: Special cleaning and packaging for wetted system components to ensure compliance with product cleanliness requirements as stated in ASTM G93 Level C.

MP, MN Series

MNSS – FNS16Y – 10NS8T – BFNS8 – C – SF2

Series	Body Material	Inlet Type	Inlet Size	Inlet Valve	Outlet Quantity	Outlet Type	Outlet Size	Outlet Valve/Plug	Drain Type	Drain Valve/Plug	Drain Size	Handle	Special Application	Cleaning and Packaging
MP	SS 316 SS	FNS Female NPT	12 3/4	No	4	FNS Female NPT	8 1/2" or 8 mm	Valve	FNS	Female NPT	8	None	NO	FC-01
MN	S4 304 SS	FRT Female BSPT	16 1	Y Yes	6	NS Male NPT	10 M10 x 1 or 10 mm	VP Valve with Plug	NS	Male NPT	8	1/2" or 8 mm	NACE S MR0175	FC-02
	4L 304L SS	FRP Female BSPP (For RP)	20 1 1/4		8	FRT Female BSPT	12 3/4" or 12 mm	T Thread	FRT	Female BSPT	10	M10 x 1 or 10 mm		
	6L 316L SS	PS Pipe Socket Weld	24 1 1/2		10	RT Male BSPT	14 M14 x 1.5 or 14 mm	TP Thread with Plug	RT	Male BSPT	12	3/4" or 12 mm		
		PB Pipe Butt Weld	32 2		12	FMS Female Metric Thread (for RP)			FMS	Female Metric Thread (for RP)	14	M14 x 1.5 or 14 mm		
		AM Class 2500 RF Serrated Flange (ANSI B 16.5)			.	MS Male Metric Thread (for RG)			MS	Male Metric Thread (for RG)				Black Aluminum Bar
		DM PN 420 RF Serrated Flange (EN 1092)			.	FRP Female BSPP (For RP)			FRP	Female BSPP (For RP)				Red Aluminum Bar
		GM PN 420 RF Serrated Flange (GB/T 9115)			.	BP Male BSPP (For RG)			BP	Male BSPP (For RG)				Green Aluminum Bar
						FL Fractional Tube Fitting			FL	Fractional Tube Fitting				Blue Aluminum Bar
						ML Metric Tube Fitting			ML	Metric Tube Fitting				321 Stainless Steel Bar
						UFB Nut+Gasket+Fractional Bulge Nipple			UFB	Nut+Gasket+Fractional Bulge Nipple				
						UMB Nut+Gasket+Metric Bulge Nipple			UMB	Nut+Gasket+Metric Bulge Nipple				

Note: "Ordering Number Description" is a reference to understand the combination rules of FITOK product part number. Not all combinations are available.

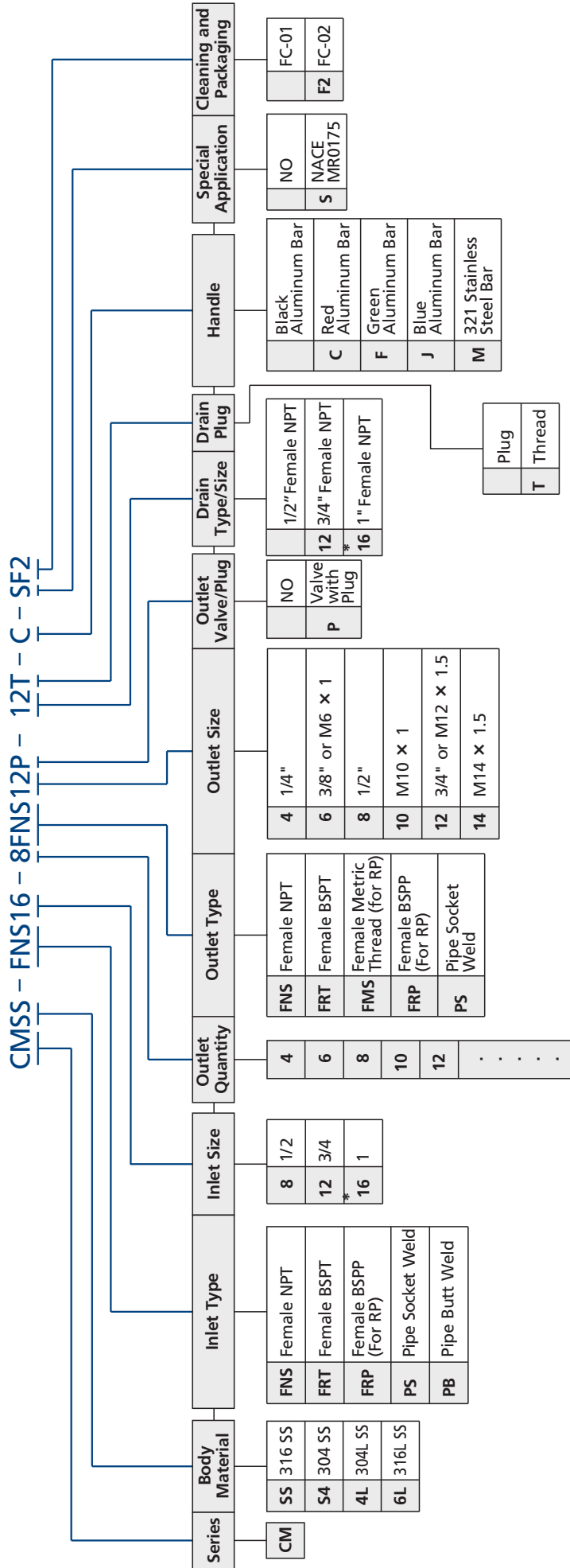
Cleaning and Packaging:

FC-01: Standard cleaning and packaging for general industrial procedures.

FC-02: Special cleaning and packaging for wetted system components to ensure compliance with product cleaning requirement as stated in ASTM G93 Level C.



CM Series



Note: * only applies to maximum working pressure up to 3000 psig.
 "Ordering Number Description" is a reference to understand the combination rules of FITOK product part number. Not all combinations are available.

Cleaning and Packaging:
 FC-01: Standard cleaning and packaging for general industrial procedures.
 FC-02: Special cleaning and packaging for wetted system components to ensure compliance with product cleaning requirement as stated in ASTM G93 Level C.

FITOK Group

FITOK GmbH (Headquarter)

Sprendlinger Landstr. 115, 63069 Offenbach am Main, Germany
Tel.: +49 69 8900 4498 Fax: +49 69 8900 4495

FITOK, Inc.

13843 North Promenade Blvd., Suite 750, Stafford, Texas 77477, USA
Tel.: +1 281 888 0077 Fax: +1 281 582 4051

FITOK Incorporated

Block C, Zone E, Yingtai Industrial Park, Dalang Street,
Longhua New District, Shenzhen, 518109, China
Tel.: +86 755 2803 2500 Fax: +86 755 2803 2619

FITOK Middle East Oil Equipment Trading LLC

208-209, Makateb Building, Airport Road, P.O.Box 185412, Deira, Dubai, UAE
Tel.: +971 4 2959 853 Fax: +971 4 2959 854

info@fitokgroup.com
www.fitokgroup.com

FK-IC-GV-13-EN-170527